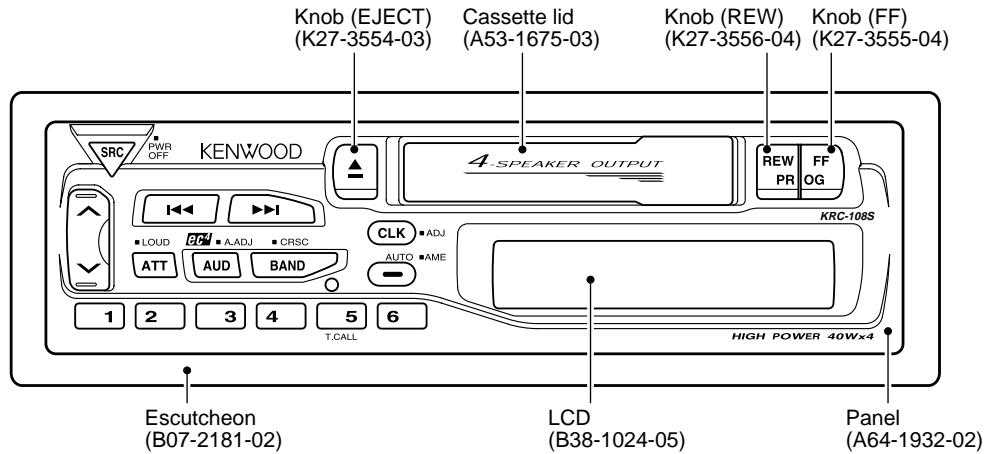


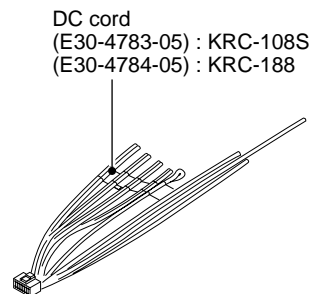
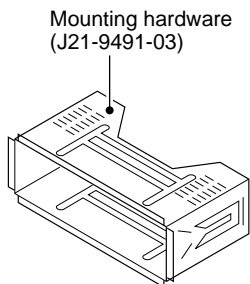
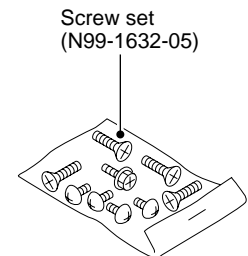
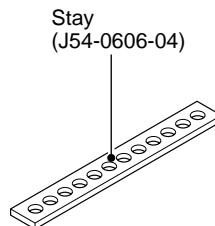
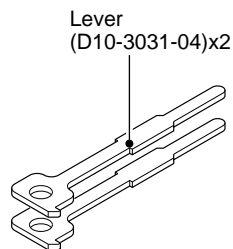
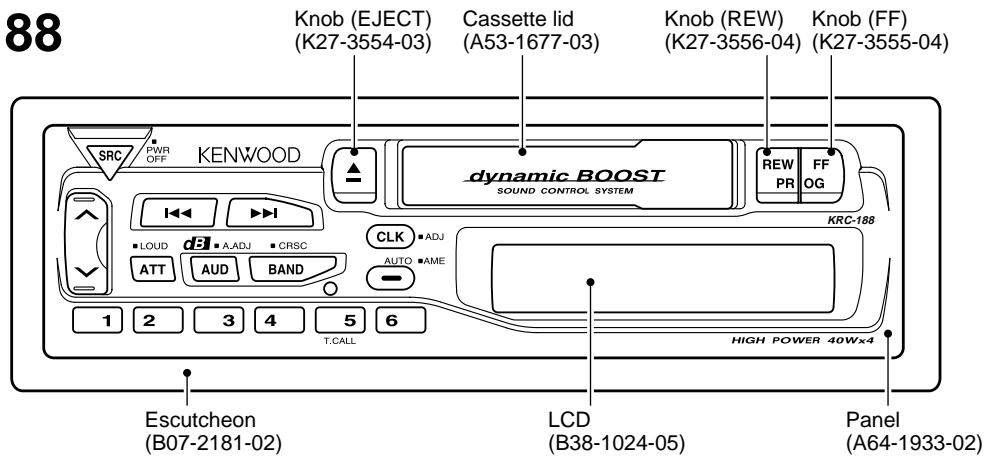
KRC-108S/188

SERVICE MANUAL

KRC-108S



KRC-188



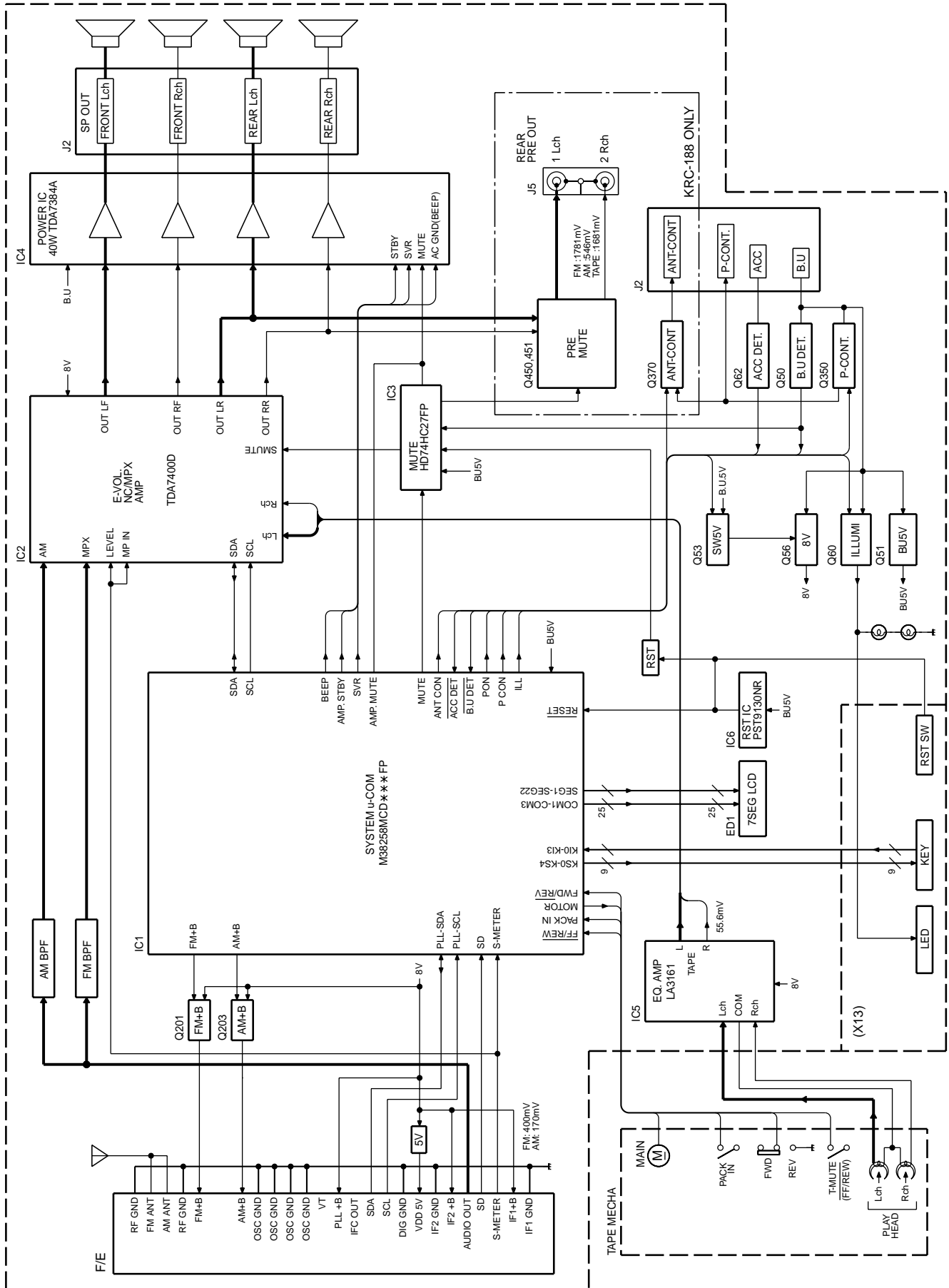
KRC-108S/188

CONTENTS

BLOCK DIAGRAM	3
MICROCOMPUTER'S TERMINAL DECRPTION	4
ADJUSTMENT	6
PC BOARD	7
SCHEMATIC DIAGRAM	11
EXPLODED VIEW	15
PARTS LIST	17
SPECIFICATIONS	BACK COVER

KRC-108S/188

BLOCK DIAGRAM



KRC-108S/188

MICROCOMPUTER'S TERMINAL DESCRIPTION

Microcomputer (M38258MCD066FP : IC1 : X14)

•Terminal description

Pin No.	Pin Name	I/O	Signal	Description	Logic
1	C1	I	(NC)	Not used.	
2	VL1	I	VL1	LCD power input.	
3-5	P67-65	I	KI0-2	Key return input.	
6-9	P64-61	O	KS0-3	Key scan output.	
10	ANO	I	SMETER	Signal meter.	
11	P57	O	KS4	Key scan output.	
12	TOUT	O	BEEP	Beep output.	
13	P55	O	(NC)	Not used.	
14	P54	O	MOTOR	Mechanism motor ON/OFF.	H: ON
15	P53	I	FF/REW	Mechanism FF/RWD detection.	L: Detected.
16	P52	I	PACK_IN	Mechanism cassette pack-in detection.	H: Detected.
17	P51/INT3	I	KI3	Key return input.	
18	P50	I	FWD/REV	Mechanism play direction detection.	H: FWD
19-25	P47-41	O	(NC)	Not used.	
26	P40	I	SD	Station detection.	H: Station detected.
27	P77	O	PLL_CLK	IC3 clock output.	
28	P76	I/O	PLL_DATA	IC3 data input/output.	
29	P75	I	IFC	AM bandwidth.	H: Station detected.
30	P74	O	AM+B	AM power output.	H: ON
31	P73	O	FM+B	FM power output.	H: ON
32	P72	O	SCK	IC2 clock output.	
33	P71	I/O	SDA	IC2 data input/output.	
34	P70	O	(NC)	Not used.	
35	RESET	I	RESET	Reset input.	
36,37	P81,80	O	(NC)	Not used.	
38	XIN	-	X_IN	Clock input.	
39	XOUT	-	X_OUT	Clock output.	
40	Vss	-	Vss	Power input (0 V).	
41	P27	I	IC2_TYPE1	IC2 constant switching.	
42	P26	I	IC2_TYPE2	IC3 constant switching.	
43	P25	O	(NC)	Not used.	
44	P24	I	SEL1	Destination type switching.	
45	P23	I	SEL2	Destination type switching.	
46	P22	O	MUTE	Muting ON/OFF.	H: MUTE
47	P21	O	STBY	Power IC standby control.	H: ON
48	P20	O	SVR	Power IC SVR control.	H: OFF
49	P17	I	ACC_DET	Acc detection.	H: ACC OFF
50	P16	I	BU_DET	Momentary power down detection.	H: Power down.

MICROCOMPUTER'S TERMINAL DESCRIPTION

Pin No.	Pin Name	I/O	Signal	Description	Logic
51	P15	O	P_MUTE	Power IC muting control.	H: Power down.
52	P14	O	ANT_CON	External antenna control.	H: ON
53	P13	O	P_CON	Power control output.	H: ON
54	P12	O	ILLUM_ON	Illumination control.	H: ON
55	P11	O	(NC)	Not used.	
56	P10	O	SW5	5V power control.	L: ON
57	P07	O	EQ_MUTE	Equalizer muting.	H: MUTE
58-64	P06-00	O	(NC)	Not used.	
65,66	P37,36	O	(NC)	Not used.	
67,68	SEG23,22	O	(NC)	Not used.	
69-90	SEG21-0	O	SEG22-1	LCD segment output.	
91	Vcc	-	Vcc	Power input (5 V).	
92	VREF	-	VREF	A/D reference voltage input.	
93	Avss	-	Avss	Analog power input (Vss).	
94	COM3	O	(NC)	Not used.	
95	COM2	O	COM3	LCD common output.	
96	COM1	O	COM2	LCD common output.	
97	COM0	O	COM1	LCD common output.	
98	VL3	I	VL3	LCD power input.	
99	VL2	I	VL2	LCD power input.	
100	C2	I	(NC)	Not used.	

How to Read the Destination Type

The destination type is set by reading the following microcomputer ports at the time of reset-start of the microcomputer.

Once the destination type is read and set during the microcomputer resetting, any change in the ports during the microcomputer operation will be ignored.

Destination Type	SEL1	SEL2
K	L	L
M	L	H
J	H	X

X: don't care

KRC-108S/188

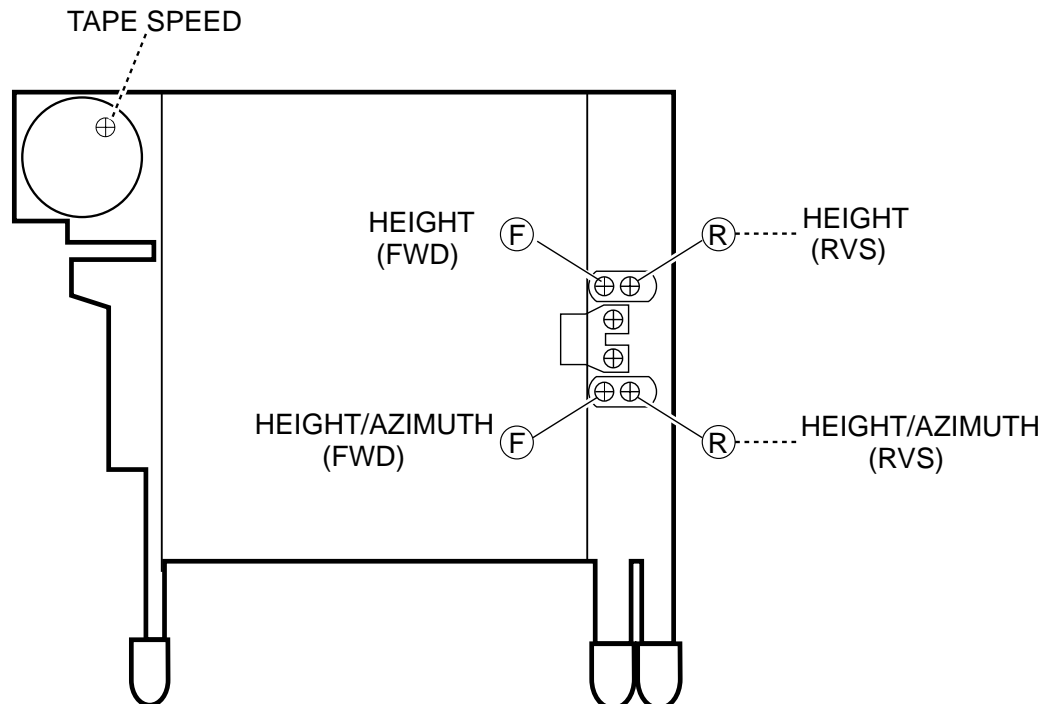
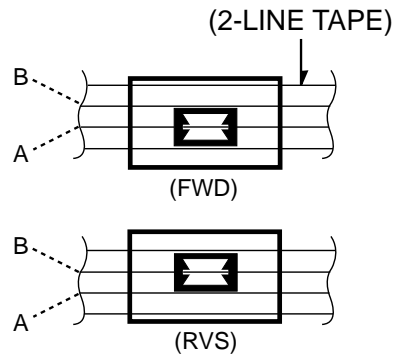
ADJUSTMENT

Set the controls and switches as follows.

BALANCE : center position BASS : center position LOUD : OFF DOLBY NR : OFF

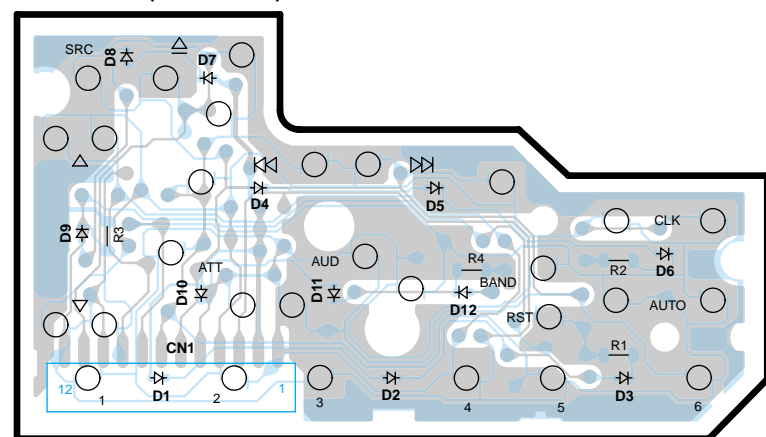
FADER : center position TREBLE : center position

No.	ITEM	TAPE	OUTPUT SETTINGS	RECEIVER SETTINGS	ALIGNMENT POINTS	ALIGN FOR
CASSETTE DECK SECTION						
[1]	HEAD HEIGHT	SCC-1659	-	TAPE PLAY	Head Height Screw	1) During FWD transport adjust (F) and (F') so that line A of 2-LINE TAPE passes through the center of the head shield plate (core center area) 2) During RVS transport adjust screws (R) and (R') so that line B of 2-LINE TAPE passes through the center of the head shield plate (core center area) 3) After the alignment above, reverse the transport direction and check the FWD alignment again. If it is deviated, perform alignment again. (Tape used : SCC-1659, manufactured by A-BEX)
[2]	HEAD AZIMUTH	TCC-153 10kHz	Connect a AC voltmeter to SP out.	TAPE PLAY	Head Azimuth Screw	Adjust the azimuth for each Lch/Rch or FWD/RVS becomes maximum

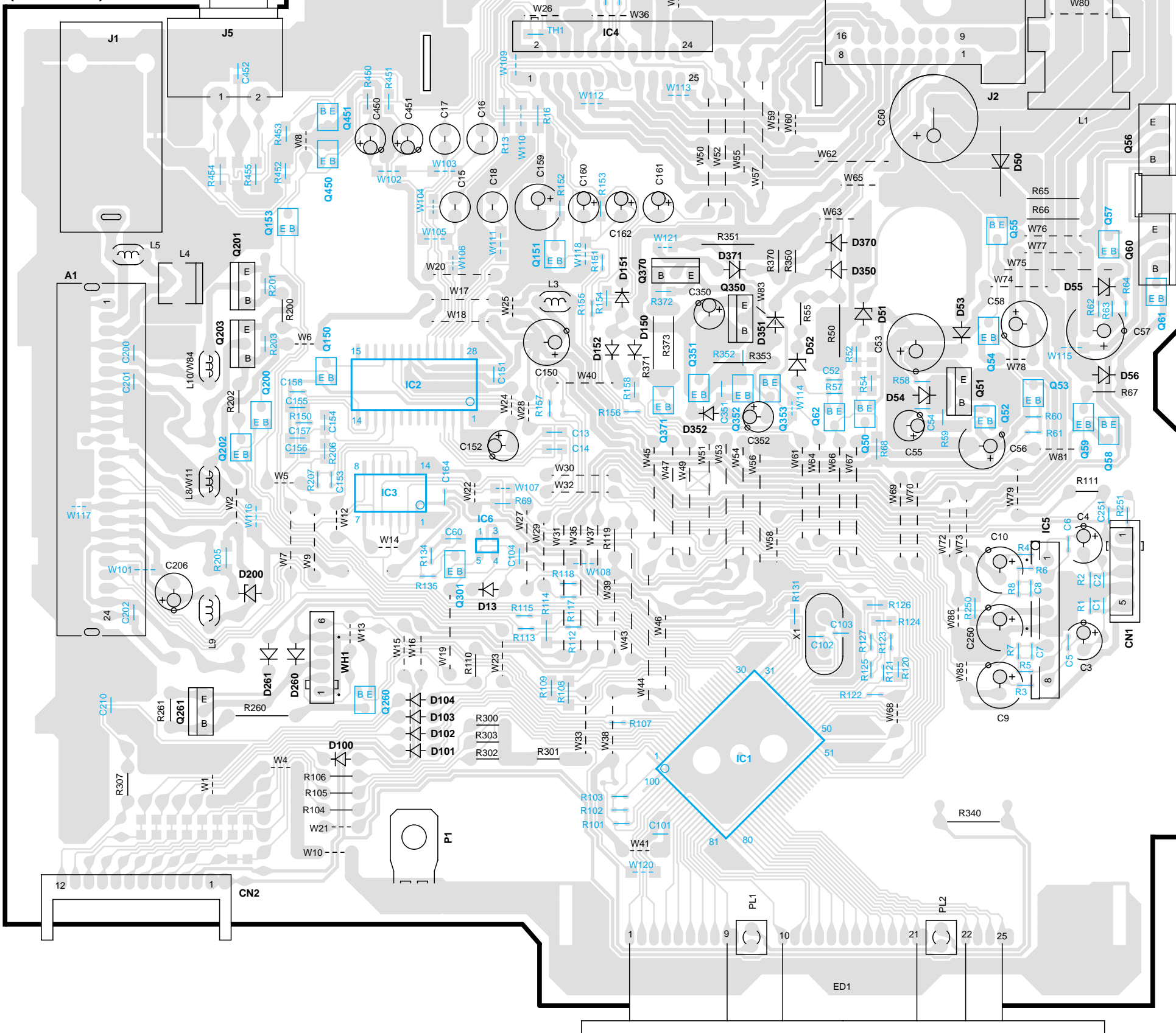


PC BOARD (COMPONENT SIDE VIEW)

X13-9660-10 (J74-0964-12)



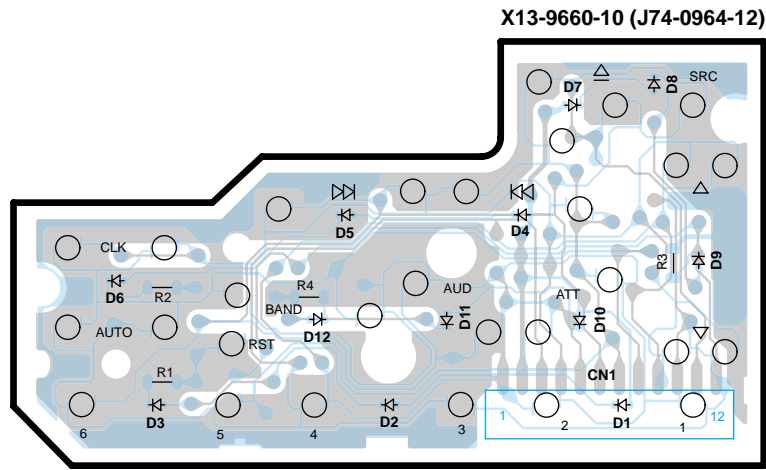
X14-6150-10/0-21 (J74-0960-12)



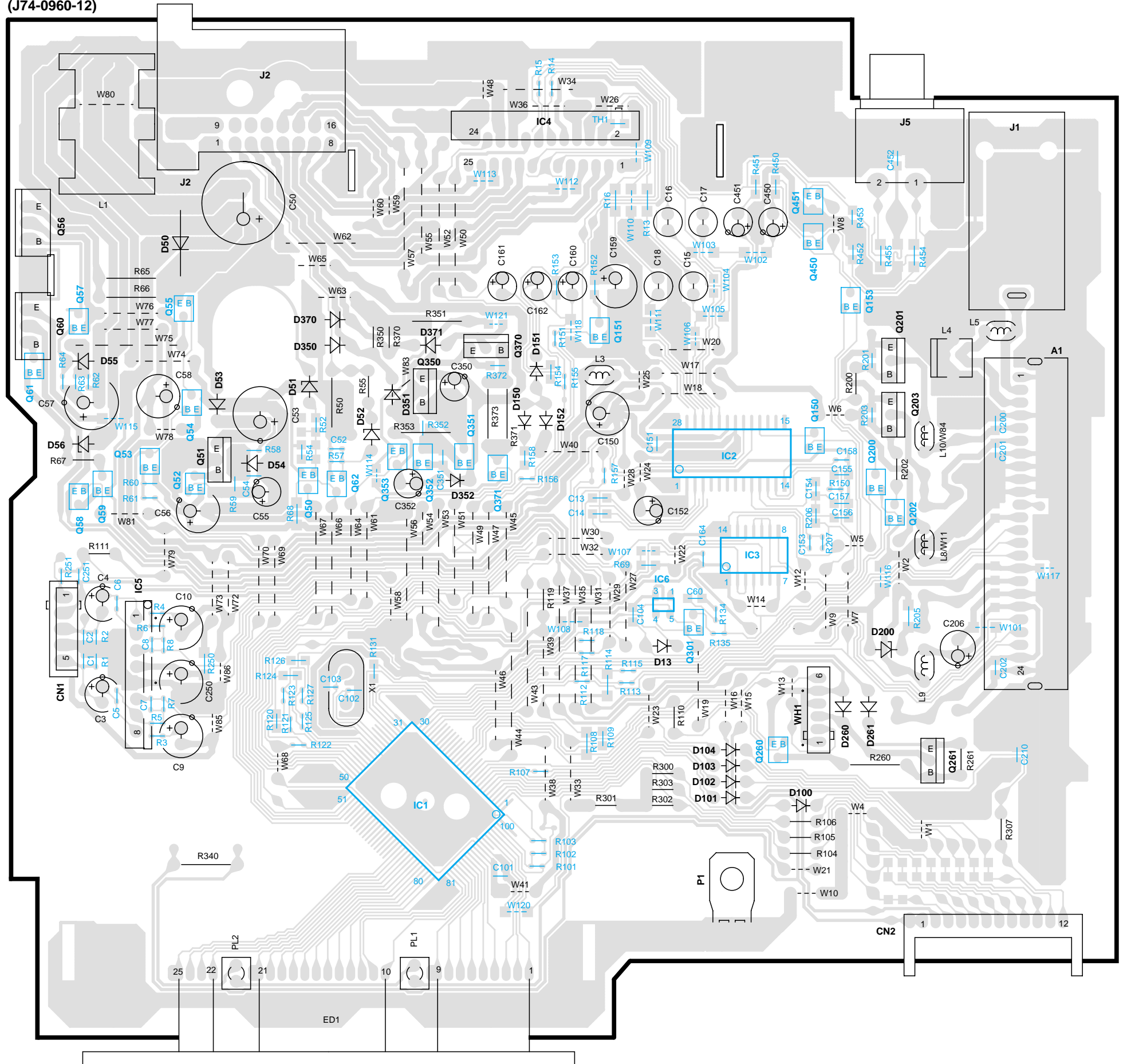
IC	Q	address
1		6H
2		4F
3		4F
4		2G
5		5J
6		5G
50		4I
51		4I
52		4I
53		4J
54		3I
55		3I
56		2J
57		3J
58		4J
59		4J
60		3J
61		3J
62		4I
150		4F
151		3G
153		3F
200		4E
201		3E
202		4E
203		3E
260		5F
261		5E
301		5F
350		3H
351		4H
352		4H
353		4H
370		3H
371		4H
450		2F
451		2F

Refer to the schematic diagram for the values of resistors and capacitors.

PC BOARD (FOIL SIDE VIEW)

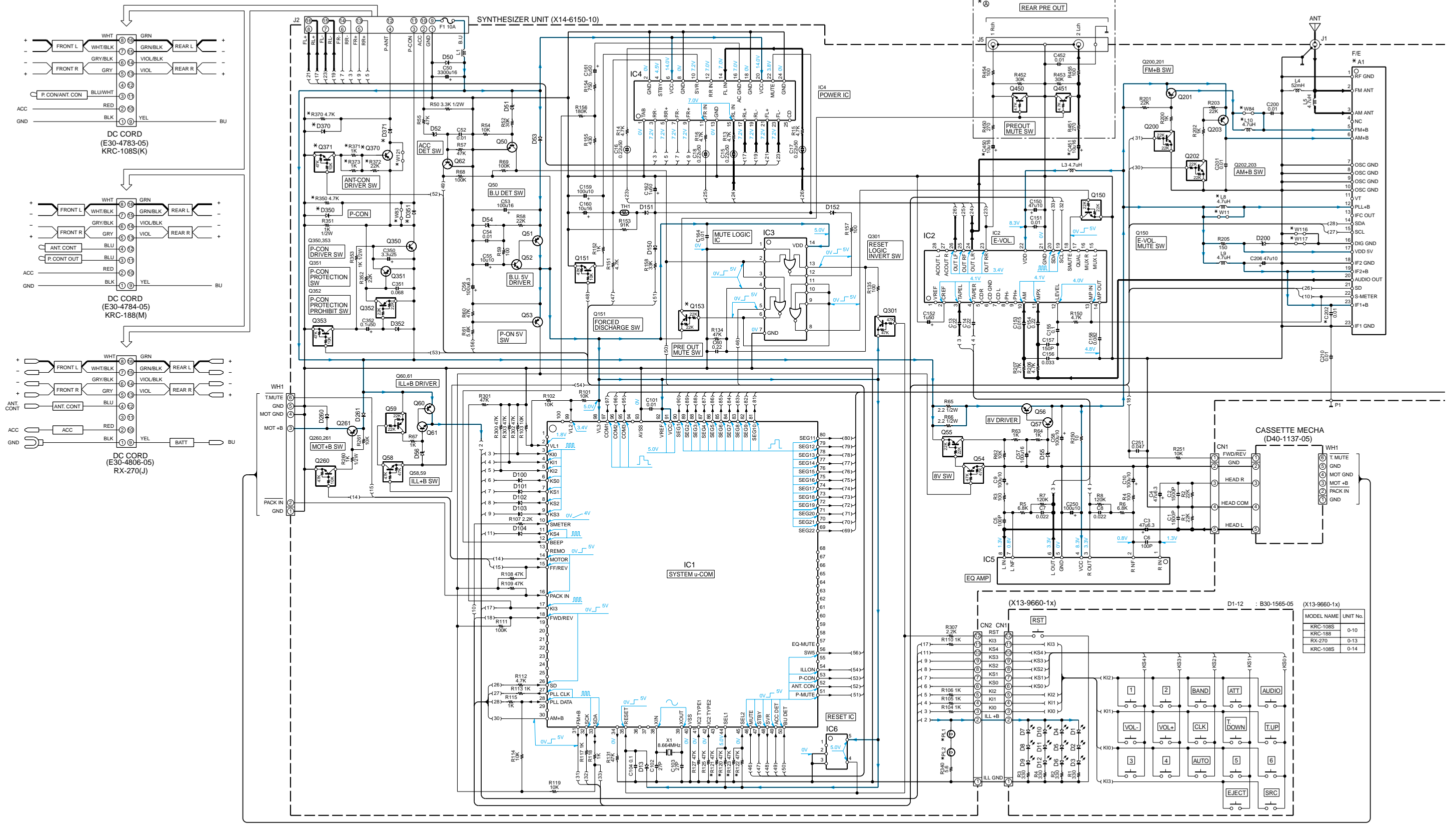


X14-6150-10/0-21 (J74-0960-12)



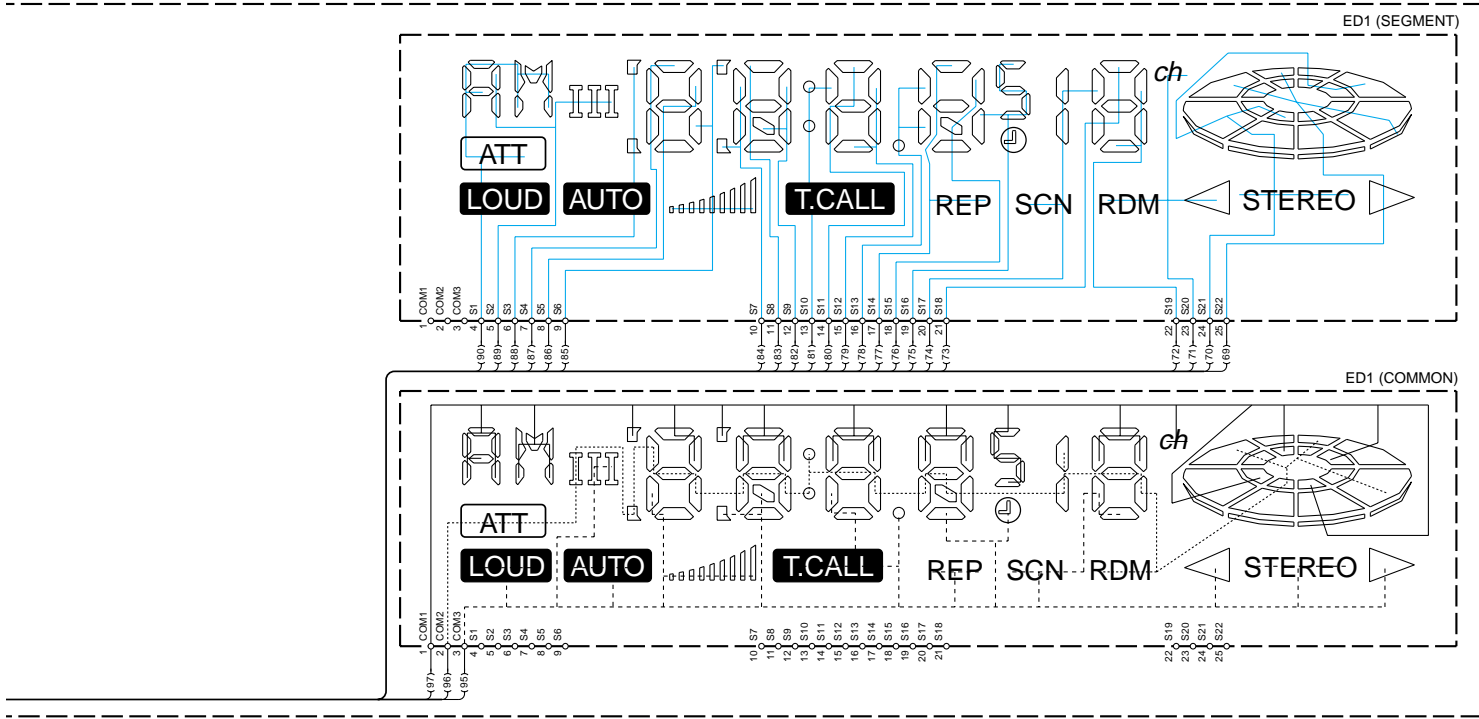
IC	Q	address
1		6P
2		4R
3		4R
4		2Q
5		4N
6		4R
	50	40
	51	40
	52	40
	53	4N
	54	30
	55	30
	56	2N
	57	3N
	58	4N
	59	4N
	60	3N
	61	3N
	62	4P
	150	4R
	151	3Q
	153	3S
	200	4S
	201	3S
	202	4S
	203	3S
	260	5R
	261	5S
	301	5R
	350	3P
	351	4P
	352	4P
	353	4P
	370	3Q
	371	4Q
	450	2R
	451	2R

Refer to the schematic diagram for the values of resistors and capacitors.



CAUTION: For continued safety, replace safety critical components only with manufacturer's recommended parts (refer to parts list).
 ⚠ Indicates safety critical components. To reduce the risk of electric shock, leakage-current or resistance measurements shall be carried out (exposed parts are acceptably insulated from the supply circuit) before the appliance is returned to the customer.
 • DC voltages are as measured with a high impedance voltmeter. Values may vary slightly due to variations between individual instruments or/and units.

MODEL NAME	UNIT No.
KRC-108S	0-10
KRC-188	0-13
RX-270	0-13
KRC-108S	0-14



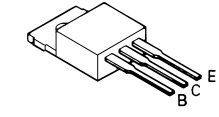
- IC1 : M38258MCD066FP Q50,52,57,61,62
 - IC2 : TDA7400D : 2SC2412K or
 - IC3 : HD74HC27FP : 2SD601A
 - IC4 : TDA7384A Q51,261 : 2SB1443
 - IC5 : LA3161 Q53 : 2SA1036K
 - IC6 : PST9135NR Q54,58 : DTC144EK or UN2213
- D13,100-104,150-152,352 Q55,59,153,352
 - : 1S1133 : DTA124EK or UN2112
 - D50 : S2V20*A
 - D51 : MA4068(N)-M Q56,60 : 2SB1655(E,F) or 2SB1565(E,F)
 - D52,200 : MA4051(N)-M Q150,200,202
 - D53,260,261,350,351,370,371 : AM01Z or : DTC124EK or UN2212
 - : ERA15-01 Q151,260,353,371
 - D54 : MA4056(N)-M : DTC114YK or UN2214
 - D55 : MA4091(N)-L Q201,203,350,370
 - D56 : MA4110-L : 2SB1277 (Q,R)
 - ED1 : B38-1024-05 Q301 : DTA144EK or UN2113
- Q351 : 2SA1037K
 - Q450,451 : DTC143TK or UN2216
- SIGNAL LINE
 ——— GND LINE
 ——— +B LINE

(X14-6150-xx)

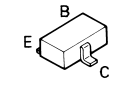
MODEL NAME	UNIT No.	(A)	R120	R121	R122, 371,373	R123	R350	R370	C202	C450, 451	D350, 351	D370, 371
KRC-108S	0-10	NO	NO	YES	NO	YES	YES	NO	YES	NO	YES	NO
KRC-108S	0-11	NO	NO	YES	NO	YES	YES	NO	YES	NO	YES	NO
KRC-188	0-21	YES	NO	YES	YES	NO	NO	YES	YES	YES	NO	YES
RX270	0-01	NO	YES	NO	NO	YES	NO	YES	NO	NO	NO	YES
RX270	0-02	NO	YES	NO	NO	YES	NO	YES	NO	NO	NO	YES

UNIT No.	Q153, 370,371	L8	L10	W11,117, 121	W83	W84, 116	F/E A1	LAMP FL1,PL2
0-10	NO	YES	NO	NO	NO	YES	X86-3160-11	B30-1418-15(GREEN)
0-11	NO	YES	NO	NO	NO	YES	X86-3200-10	B30-1418-15(GREEN)
0-21	YES	YES	NO	NO	YES	YES	X86-3160-11	B38-1576-05(MILKY WHITE)
0-01	NO	NO	YES	YES	NO	NO	X86-3160-01	B38-1418-15(GREEN)
0-02	NO	NO	YES	YES	NO	NO	X86-3160-02	B30-1418-15(GREEN)

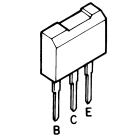
2SB1565



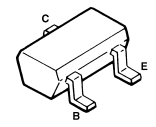
- DTA124EK DTA144EK
- DTC114YK DTC124EK
- DTC143TK DTC144EK
- 2SA1036K 2SC2412K



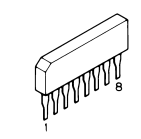
2SB1277
2SB1443



2SA1037K

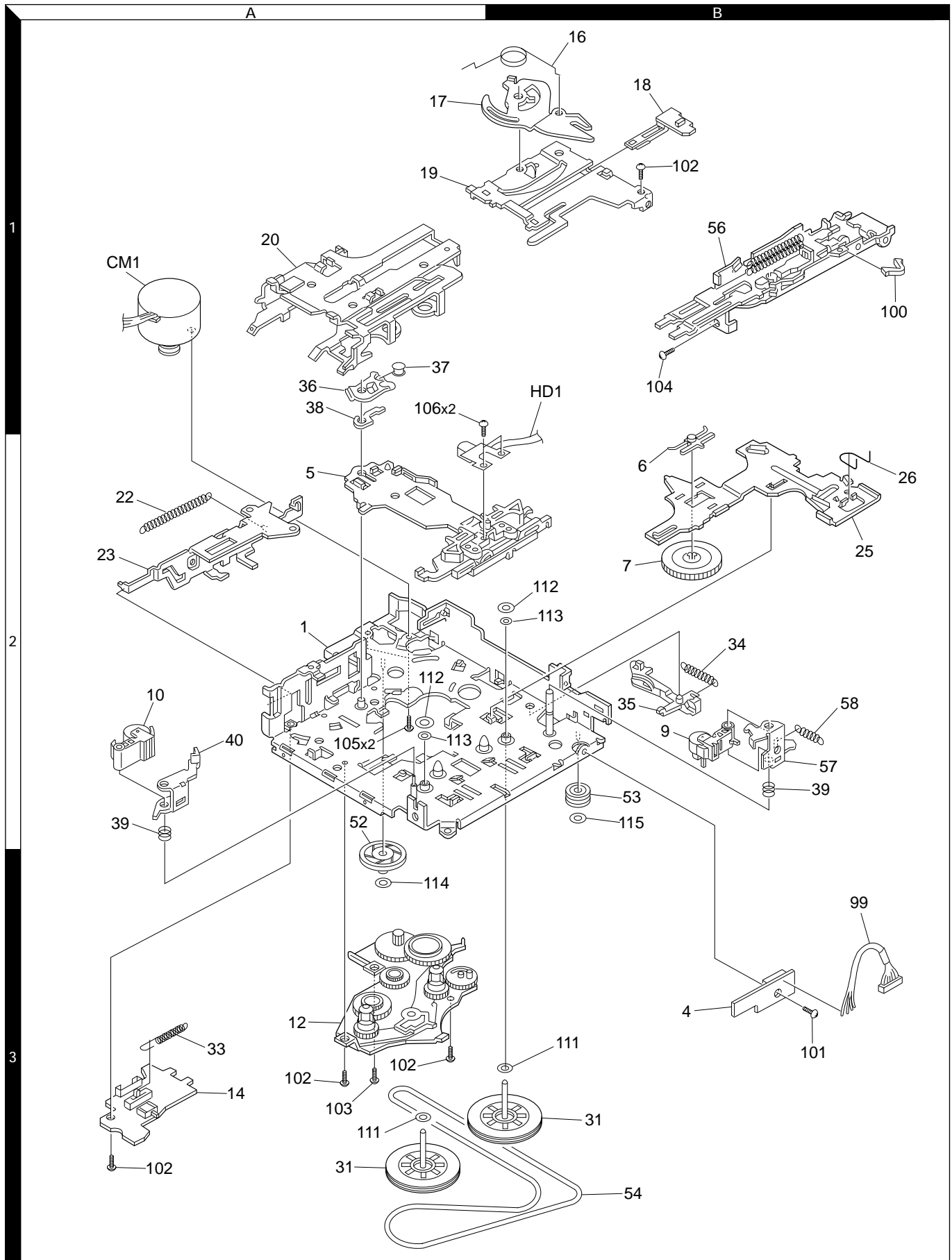


LA3161



KRC-108S/188

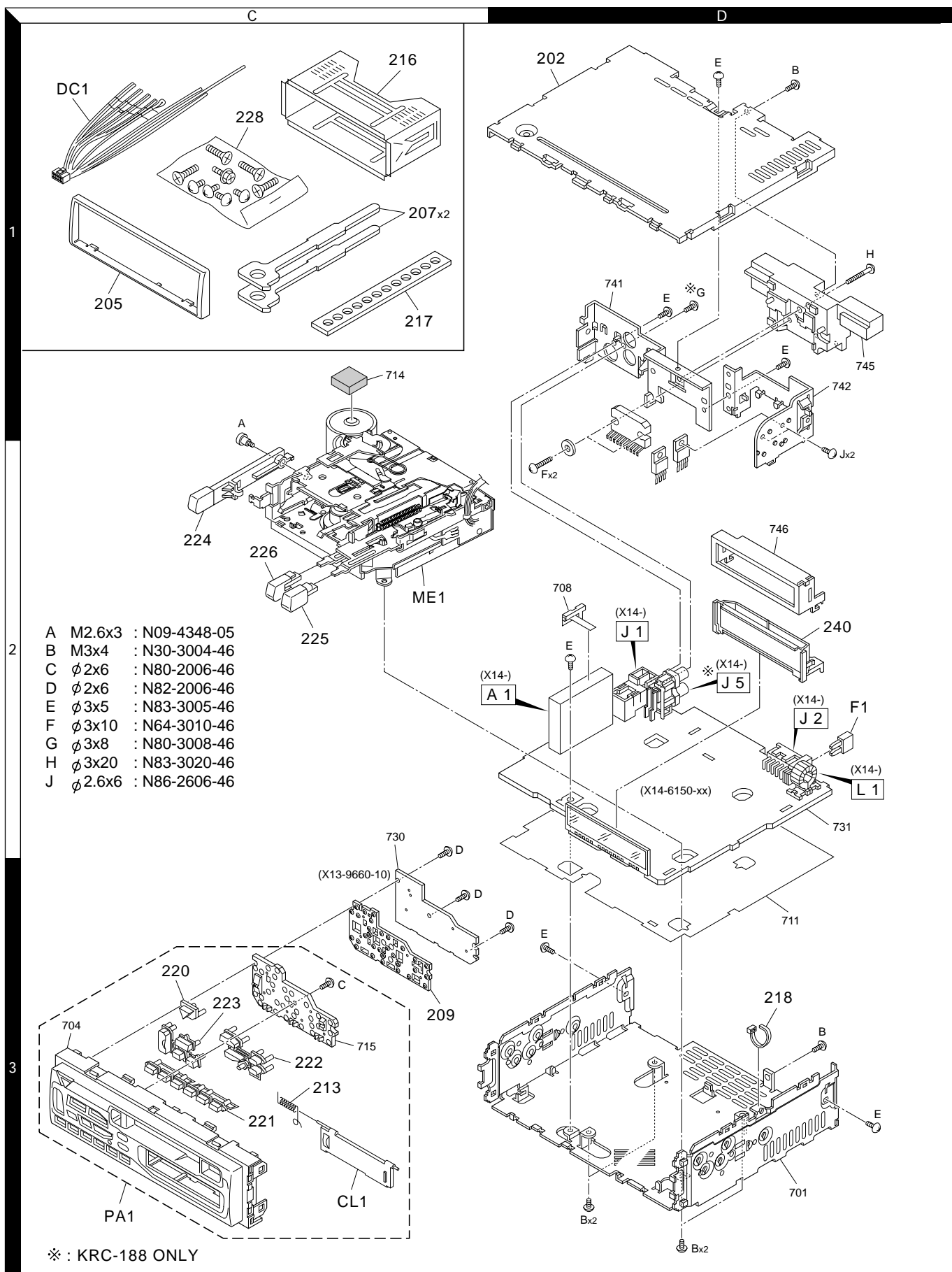
EXPLODED VIEW (MECHANISM)



Parts with the exploded numbers larger than 700 are not supplied.

KRC-108S/188

EXPLODED VIEW (UNIT)



16 Parts with the exploded numbers larger than 700 are not supplied.

KRC-108S/188

PARTS LIST

*New Parts

Parts without **Parts No.** are not supplied.

Les articles non mentionnés dans le **Parts No.** ne sont pas fournis.

Teile ohne **Parts No.** werden nicht geliefert.

Ref. No.	A d	N e w	Parts No.	Description	Dest inati on
KRC-108S/188					
202	1D	*	A52-0756-02	TOP PLATE	
CL1	3C	*	A53-1675-03	CASSETTE LID	K
CL1	3C	*	A53-1677-03	CASSETTE LID	M1
PA1	3C	*	A64-1932-02	PANEL ASSY	K
PA1	3C	*	A64-1933-02	PANEL ASSY	M1
205	1C		B07-2181-02	ESCUTCHEON	
-			B46-0100-50	WARRANTY CARD	K
-			B58-1344-04	CAUTION CARD	
-		*	B64-1540-00	INST.MANUAL (ENG.FRE.SPA.PRO.)	K
-		*	B64-1541-00	INST.MANUAL (ENGLISH, CHINESE)	M1
-		*	B64-1591-00	INST.MANUAL (ARABIC)	M1
207	1C		D10-3031-04	LEVER	
ME1	1C	*	D40-1137-05	CASSETTE MECHANISM ASSY	
209	3C	*	E29-1801-03	CONDUCTIVE RUBBER	
DC1	1C		E30-4783-05	DC CORD	K
DC1	1C		E30-4784-05	DC CORD	M1
F1	2D		F52-0006-05	FUSE(MINI BLADE TYPE)	
213	3C		G01-2525-04	TORSION COIL SPRING	
-			H10-4685-02	POLYSTYRENE FOAMED FIXTURE	
-			H25-0329-04	PROTECTION BAG (280X450X0.03)	
-			H25-0337-04	PROTECTION BAG (180X300X0.03)	
-		*	H54-1603-03	ITEM CARTON CASE	K
-		*	H54-1605-03	ITEM CARTON CASE	M1
216	1C		J21-9491-03	MOUNTING HARDWARE ASSY	
217	1C		J54-0606-04	STAY	
218	3D		J61-0307-05	WIRE BAND	
220	3C	*	K24-3551-04	KNOB (SRC)	
221	3C	*	K25-1104-03	KNOB (P1-6)	
222	3C	*	K25-1105-03	KNOB (BAND,UP,CLK,AUTO,RES)	
223	3C	*	K25-1106-03	KNOB (VOL,AUD,ATT,DOWN)	
224	2C	*	K27-3554-03	KNOB (EJECT)	
225	2C	*	K27-3555-04	KNOB (FF)	
226	2C	*	K27-3556-04	KNOB (REW)	
228	1C		N99-1632-05	SCREW SET	
A	1C	*	N09-4348-05	STEPPED SCREW (M2.6X3)	
B	3D		N30-3004-46	PAN HEAD MACHINE SCREW	
C	3C		N80-2006-46	PAN HEAD TAPTITE SCREW	
D	3C		N82-2006-46	BINDING HEAD TAPTITE SCREW	
E	3D		N83-3005-46	PAN HEAD TAPTITE SCREW	
SWITCH UNIT (X13-9660-10)					
D1 -12			B30-1565-05	LED (1608,PG)	
CN1			E40-9453-05	SOCKET FOR PIN ASSY	
R1 -4			RK73EB2B331J	CHIP R 330 J 1/8W	
SYTHESIZER UNIT (X14-6150-10/0-21)					
240	2D	*	A33-0621-12	REFLECTOR	
ED1		*	B38-1024-05	LIQUID CRYSTAL	

Ref. No.	A d	N e w	Parts No.	Description	Dest inati on
PL1 ,2			B30-1418-15	LAMP (5.5V 125MA,GR)	K
PL1 ,2		*	B30-1576-05	LAMP (5.5V 125MA,MI)	M1
C1 ,2			CK73GB1H152K	CHIP C 1500PF	K
C3 ,4			CE04CW0J470M	ELECTRO 47UF	6.3WV
C5 ,6			CC73GCH1H101J	CHIP C 100PF	J
C7 ,8			CK73GB1H223K	CHIP C 0.022UF	K
C9 ,10			CE04CW1A101M	ELECTRO 100UF	10WV
C13 ,14			CK73FB1C224K	CHIP C 0.22UF	K
C15 -18			C90-5296-05	ELECTRO 0.22UF	50WV
C50			C90-5236-05	ELECTRO 3300UF	16WV
C52			CK73GB1H103K	CHIP C 0.010UF	K
C53			CE04CW1C101M	ELECTRO 100UF	16WV
C54			CK73GB1H103K	CHIP C 0.010UF	K
C55			C90-2594-05	ELECTRO 10UF	10WV
C56			CE04CW0J101M	ELECTRO 100UF	6.3WV
C57			CE04CW1C101M	ELECTRO 100UF	16WV
C58			CE04CW1A101M	ELECTRO 100UF	10WV
C60			CK73FB1C224K	CHIP C 0.22UF	K
C101			CK73GB1H103K	CHIP C 0.010UF	K
C102,103			CC73GCH1H220J	CHIP C 22PF	J
C104			CK73FB1C104K	CHIP C 0.10UF	K
C150			CE04CW1A470M	ELECTRO 47UF	10WV
C151			CK73GB1H103K	CHIP C 0.010UF	K
C152			C90-2608-05	ELECTRO 1.0UF	50WV
C153			CK73GB1E153K	CHIP C 0.015UF	K
C154			CK73FB1C224K	CHIP C 0.22UF	K
C155			CK73FB1C104K	CHIP C 0.10UF	K
C156			CK73FB1E333K	CHIP C 0.033UF	K
C157			CC73FCH1H151J	CHIP C 150PF	J
C158			CK73GB1C823K	CHIP C 0.082UF	K
C159			CE04CW1A101M	ELECTRO 100UF	10WV
C160			C90-2608-05	ELECTRO 1.0UF	50WV
C161			C90-2935-05	ELECTRO 1.0UF	50WV
C162			C90-2608-05	ELECTRO 1.0UF	50WV
C164			CK73GB1H103K	CHIP C 0.010UF	K
C200,201			CK73FB1H103K	CHIP C 0.010UF	K
C206			CE04DW1A470M	ELECTRO 47UF	10WV
C210			CK73FB1H103K	CHIP C 0.010UF	K
C250			CE04CW1A101M	ELECTRO 100UF	10WV
C251			CK73GB1C473K	CHIP C 0.047UF	K
C350			C90-2598-05	ELECTRO 3.3UF	25WV
C351			CK73FB1E683K	CHIP C 0.068UF	K
C352			C90-2602-05	ELECTRO 0.10UF	50WV
C450,451			C90-2597-05	ELECTRO 10UF	16WV
C452			CK73FB1H103K	CHIP C 0.010UF	K
CN1			E40-3240-05	PIN ASSY	
CN2			E40-9452-05	PIN ASSY	
J1			E04-0312-05	RF COAXIAL CABLE RECEPTACLE	
J2			E58-0863-15	RECTANGULAR RECEPTACLE	
J5			E63-0013-05	PIN JACK	M1
WH1			E39-0344-05	WIRING HARNESS	
L1			L33-1063-15	CHOKE COIL	
L3			L40-4795-91	SMALL FIXED INDUCTOR(4.7UH,J)	

K : KRC-108S M1 : KRC-188

△ indicates safety critical components. 17

PARTS LIST

*New Parts

Parts without **Parts No.** are not supplied.

Les articles non mentionnes dans le **Parts No.** ne sont pas fournis.

Teile ohne **Parts No.** werden nicht geliefert.

SYTHESIZER UNIT (X14-6150-10/0-21)

Ref. No.	A d d	N e w	Parts No.	Description	Dest inati on
L4			L33-1123-05	LINE FILTER COIL	
L5			L40-4795-91	SMALL FIXED INDUCTOR(4.7UH,J)	
L9			L40-4795-91	SMALL FIXED INDUCTOR(4.7UH,J)	
X1			L77-2032-05	CRYSTAL RESONATOR	
E	1D		N83-3005-46	PAN HEAD TAPTITE SCREW	
F	2D		N64-3010-46	PAN HEAD SEMS SCREW	
G	1D		N80-3008-46	PAN HEAD TAPTITE SCREW	M1
H	1D		N83-3020-46	PAN HEAD TAPTITE SCREW	
J	1D		N86-2606-46	BINDING HEAD TAPTITE SCREW	
R1 ,2			RK73GB1J223J	CHIP R 22K J 1/16W	
R3 ,4			RK73GB1J101J	CHIP R 100 J 1/16W	
R5 ,6			RK73GB1J682J	CHIP R 6.8K J 1/16W	
R7 ,8			RK73GB1J124J	CHIP R 120K J 1/16W	
R13			RK73EB2B472J	CHIP R 4.7K J 1/8W	
R14 ,15			RK73GB1J472J	CHIP R 4.7K J 1/16W	
R16			RK73EB2B472J	CHIP R 4.7K J 1/8W	
R50			RD14DB2H332J	SMALL-RD 3.3K J 1/2W	
R52			RK73FB2A303J	CHIP R 30K J 1/10W	
R54			RK73FB2A103J	CHIP R 10K J 1/10W	
R57			RK73GB1J473J	CHIP R 47K J 1/16W	
R58			RK73GB1J223J	CHIP R 22K J 1/16W	
R59			RK73GB1J101J	CHIP R 100 J 1/16W	
R60			RK73GB1J473J	CHIP R 47K J 1/16W	
R61			RK73GB1J562J	CHIP R 5.6K J 1/16W	
R62			RK73GB1J103J	CHIP R 10K J 1/16W	
R63 ,64			RK73GB1J102J	CHIP R 1.0K J 1/16W	
R65 ,66			RD14DB2H2R2J	SMALL-RD 2.2 J 1/2W	
R68			RK73EB2B104J	CHIP R 100K J 1/8W	
R69			RK73FB2A104J	CHIP R 100K J 1/10W	
R101-103			RK73GB1J103J	CHIP R 10K J 1/16W	
R107			RK73GB1J222J	CHIP R 2.2K J 1/16W	
R108			RK73EB2B473J	CHIP R 47K J 1/8W	
R109			RK73FB2A473J	CHIP R 47K J 1/10W	
R112			RK73GB1J472J	CHIP R 4.7K J 1/16W	
R113			RK73GB1J102J	CHIP R 1.0K J 1/16W	
R114			RK73EB2B103J	CHIP R 10K J 1/8W	
R115			RK73GB1J102J	CHIP R 1.0K J 1/16W	
R117,118			RK73GB1J102J	CHIP R 1.0K J 1/16W	
R121			RK73GB1J473J	CHIP R 47K J 1/16W	K
R121,122			RK73GB1J473J	CHIP R 47K J 1/16W	M1
R123			RK73GB1J473J	CHIP R 47K J 1/16W	K
R125			RK73GB1J473J	CHIP R 47K J 1/16W	
R127			RK73GB1J473J	CHIP R 47K J 1/16W	
R131			RK73FB2A473J	CHIP R 47K J 1/10W	
R134			RK73GB1J473J	CHIP R 47K J 1/16W	
R135			RK73GB1J101J	CHIP R 100 J 1/16W	
R150,151			RK73GB1J472J	CHIP R 4.7K J 1/16W	
R152			RK73FB2A102J	CHIP R 1.0K J 1/10W	
R153			RK73FB2A913J	CHIP R 91K J 1/10W	
R154			RK73FB2A751J	CHIP R 750 J 1/10W	
R155			RK73GB1J431J	CHIP R 430 J 1/16W	
R156			RK73GB1J154J	CHIP R 150K J 1/16W	
R157			RK73GB1J101J	CHIP R 100 J 1/16W	
R158			RK73FB2A333J	CHIP R 33K J 1/10W	

Ref. No.	A d d	N e w	Parts No.	Description	Dest inati on
R201			RK73FB2A223J	CHIP R 22K J 1/10W	
R203			RK73FB2A223J	CHIP R 22K J 1/10W	
R205			RK73EB2B151J	CHIP R 150 J 1/8W	
R206			RK73FB2A472J	CHIP R 4.7K J 1/10W	
R207			RK73GB1J272J	CHIP R 2.7K J 1/16W	
R250			RK73EB2B100J	CHIP R 10 J 1/8W	
R251			RK73GB1J103J	CHIP R 10K J 1/16W	
R260			RD14DB2H102J	SMALL-RD 1.0K J 1/2W	
R351			RD14DB2H102J	SMALL-RD 1.0K J 1/2W	
R352			RK73FB2A223J	CHIP R 22K J 1/10W	
R353			RD14DB2H102J	SMALL-RD 1.0K J 1/2W	
R371			RD14DB2H102J	SMALL-RD 1.0K J 1/2W	M1
R372			RK73FB2A223J	CHIP R 22K J 1/10W	M1
R373			RD14DB2H102J	SMALL-RD 1.0K J 1/2W	M1
R450,451			RK73FB2A271J	CHIP R 270 J 1/10W	M1
R452,453			RK73FB2A303J	CHIP R 30K J 1/10W	M1
R454,455			RK73EB2B101J	CHIP R 100 J 1/8W	M1
W101			R92-2053-05	CHIP R 0 J 1/8W	K
W101-103			R92-2053-05	CHIP R 0 J 1/8W	M1
W104			R92-2052-05	CHIP R 0 J 1/10W	
W105			R92-2053-05	CHIP R 0 J 1/8W	M1
W106,107			R92-2052-05	CHIP R 0 J 1/10W	
W108-113			R92-2053-05	CHIP R 0 J 1/8W	
W114			R92-2052-05	CHIP R 0 J 1/10W	
W115			R92-2053-05	CHIP R 0 J 1/8W	
W118			R92-2053-05	CHIP R 0 J 1/8W	
W120			R92-2053-05	CHIP R 0 J 1/8W	
D13			1SS133	DIODE	
D50			S2V20*A	DIODE	
D51			MA4068(N)-M	ZENER DIODE	
D52			MA4051(N)-M	ZENER DIODE	
D53			AM01Z	DIODE	
D53			ERA15-01	DIODE	
D54			MA4056(N)-M	ZENER DIODE	
D55			MA4091(N)-L	ZENER DIODE	
D56			MA4110-L	ZENER DIODE	
D100-104			1SS133	DIODE	
D150-152			1SS133	DIODE	
D200			MA4051(N)-M	ZENER DIODE	
D260,261			AM01Z	DIODE	
D260,261			ERA15-01	DIODE	
D350,351			AM01Z	DIODE	K
D350,351			ERA15-01	DIODE	K
D352			1SS133	DIODE	
D370,371			AM01Z	DIODE	M1
D370,371			ERA15-01	DIODE	M1
IC1		*	M38258MCD066FP	MI-COM IC	
IC2			TDA7400D	ANALOGUE IC	
IC3			HD74HC27FP	MOS-IC	
IC4			TDA7384A	ANALOGUE IC	
IC5			LA3161	IC(PREAMP X2)	
IC6		*	PST9135NR	ANALOGUE IC	
Q50			2SC2412K	TRANSISTOR	
Q50			2SD601A	TRANSISTOR	

K : KRC-108S M1 : KRC-188

PARTS LIST

*New Parts

Parts without **Parts No.** are not supplied.

Les articles non mentionnes dans le **Parts No.** ne sont pas fournis.

Teile ohne **Parts No.** werden nicht geliefert.

SYTHESIZER UNIT (X14-6150-10/0-21)

Ref. No.	A d d	N e w	Parts No.	Description	Dest inati on
Q51			2SB1443	TRANSISTOR	
Q52			2SC2412K	TRANSISTOR	
Q52			2SD601A	TRANSISTOR	
Q53			2SA1036K	TRANSISTOR	
Q54			DTC144EK	DIGITAL TRANSISTOR	
Q54			UN2213	DIGITAL TRANSISTOR	
Q55			DTA124EK	DIGITAL TRANSISTOR	
Q55			UN2112	DIGITAL TRANSISTOR	
Q56			2SB1565(E,F)	TRANSISTOR	
Q56			2SB1655(E,F)	TRANSISTOR	
Q57			2SC2412K	TRANSISTOR	
Q57			2SD601A	TRANSISTOR	
Q58			DTC144EK	DIGITAL TRANSISTOR	
Q58			UN2213	DIGITAL TRANSISTOR	
Q59			DTA124EK	DIGITAL TRANSISTOR	
Q59			UN2112	DIGITAL TRANSISTOR	
Q60			2SB1565(E,F)	TRANSISTOR	
Q60			2SB1655(E,F)	TRANSISTOR	
Q61 ,62			2SC2412K	TRANSISTOR	
Q61 ,62			2SD601A	TRANSISTOR	
Q150			DTC124EK	DIGITAL TRANSISTOR	
Q150			UN2212	DIGITAL TRANSISTOR	
Q151			DTC114YK	DIGITAL TRANSISTOR	
Q151			UN2214	DIGITAL TRANSISTOR	
Q153			DTA124EK	DIGITAL TRANSISTOR	M1
Q153			UN2112	DIGITAL TRANSISTOR	M1
Q200			DTC124EK	DIGITAL TRANSISTOR	
Q200			UN2212	DIGITAL TRANSISTOR	
Q201			2SB1277(Q,R)	TRANSISTOR	
Q202			DTC124EK	DIGITAL TRANSISTOR	
Q202			UN2212	DIGITAL TRANSISTOR	
Q203			2SB1277(Q,R)	TRANSISTOR	
Q260			DTC114YK	DIGITAL TRANSISTOR	
Q260			UN2214	DIGITAL TRANSISTOR	
Q261			2SB1443	TRANSISTOR	
Q301			DTA144EK	DIGITAL TRANSISTOR	
Q301			UN2113	DIGITAL TRANSISTOR	
Q350			2SB1277(Q,R)	TRANSISTOR	
Q351			2SA1037K	TRANSISTOR	
Q352			DTA124EK	DIGITAL TRANSISTOR	
Q352			UN2112	DIGITAL TRANSISTOR	
Q353			DTC114YK	DIGITAL TRANSISTOR	
Q353			UN2214	DIGITAL TRANSISTOR	
Q370			2SB1277(Q,R)	TRANSISTOR	M1
Q371			DTC114YK	DIGITAL TRANSISTOR	M1
Q371			UN2214	DIGITAL TRANSISTOR	M1
Q450,451			DTC143TK	DIGITAL TRANSISTOR	M1
Q450,451			UN2216	DIGITAL TRANSISTOR	M1
TH1			PTH9C42BD471Q	POSITIVE RESISTOR	M1
A1	2D		X86-3160-11	FRONT-END UNIT	
CASSETTE MECHANISM ASSY (D40-1137-05)					
1	2A		A10-4328-08	CHASSIS CALKING ASSY	
4	3B		J26-4017-08	PRINTED WIRING BOARD ASSY	
5	2A		J21-7778-08	MOUNTING HARDWARE	

Ref. No.	A d d	N e w	Parts No.	Description	Dest inati on
6	2B		D10-4091-08	SLIDER	
7	2B		D13-1323-08	GEAR	
9	2B		D10-4200-08	ARM ASSY (F)	
10	2A		D10-4201-08	ARM ASSY (R)	
12	3A		A11-0930-08	SUB CHASSIS CALKING ASSY	
14	3A		J26-4018-08	PRINTED WIRING BOARD ASSY	
16	1B		G01-2826-08	TORSION COIL SPRING	
17	1A		D10-4094-08	SLIDER	
18	1B		D10-4095-08	SLIDER	
19	1A		D10-4096-08	ARM	
20	1A		J19-4736-08	HOLDER ASSY	
22	2A		G01-2827-08	TENSION COIL SPRING	
23	2A		D10-4097-08	LEVER	
25	2B		D10-4098-08	SLIDER	
26	2B		G09-2019-08	SPRING	
31	3A		D01-0608-08	FLYWHEEL ASSY	
33	3A		G01-2828-08	TENSION COIL SPRING	
34	2B		G01-2829-08	TENSION COIL SPRING	
35	2B		D10-4099-08	ARM	
36	1A		D10-4100-08	ARM	
37	1A		D14-0682-08	ROLLER	
38	1A		D10-4101-08	LEVER	
39	2A		G01-2830-08	COMPRESSION COIL SPRING	
40	2A		D10-4102-08	ARM	
52	2A		D13-1110-08	GEAR	
53	2B		D15-0909-08	PULLEY	
54	3B		D16-0606-08	BELT	
56	1B		D10-4103-08	ARM ASSY	
57	2B		D10-4104-08	ARM	
58	2B		G01-2831-08	TENSION COIL SPRING	
99	3B		E39-0181-08	WIRE HARNESS	
100	1B		J11-0618-08	CLAMPER	
101	3B		N09-4328-08	SCREW	
102	3A		N09-4326-08	SCREW	
103	3A		N09-4191-08	SCREW	
104	1B		N09-4192-08	SCREW	
105	2A		N09-4058-08	SCREW	
106	1A		N09-4109-08	SCREW	
111	3A		N19-2082-08	FLAT WASHER	
112	2A		N19-2083-08	FLAT WASHER	
113	2A		N19-2084-08	FLAT WASHER	
114	3A		N19-2043-08	FLAT WASHER	
115	2B		N19-2038-08	FLAT WASHER	
HD1	1B	*	T31-0229-08	PLAYBACK HEAD	
CM1	1A	*	T42-1025-08	MOTOR ASSY	

KRC-108S/188

SPECIFICATIONS

KRC-108S

FM

Frequency Range (Frequency step) 87.9MHz-107.9MHz (200kHz)
Channel Space Selection 50k/200kHz
Usable Sensitivity (S/N:30dB) 9.3dBf (0.8µ V/75Ω)
Quieting Sensitivity (S/N:50dB) 15.2dBf (1.6µ V/75Ω)
Frequency Response (±3.0dB) 30Hz-15kHz
S/N.....70dB (MONO)
Selectivity.....≥80dB (±400kHz)
Stereo Separation 40dB (1kHz)

AM

Frequency Range (Frequency step) 530kHz-1700kHz(10kHz)
Channel Space Selection 9k/10kHz
Usable Sensitivity (S/N:20dB) 28dBµ(25µ V)

CASSETTE

Tape Speed.....4.76cm/sec.
Wow/Flutter.....0.12%(WRMS)
Frequency Response(±3.0dB) 30-14kHz (120µ s)
Separation.....40dB (1kHz)
S/N.....52dB

AMP

Maximum Power.....40Wx4
Full Bandwidth Power 20Wx4 (at less than 1%THD)

TONE

Bass 100Hz±10dB
Treble 10kHz±10dB

GENERAL

Operating voltage (11-16V allowable) 14.4V
Current consumption 10A
Installation size (W) 182 (mm) 7-3/16(in)
(H) 53 (mm) 2-1/16(in)
(D) 155 (mm) 6-1/8(in)
Weight 3.1lbs(1.4kg)

KRC-188

FM

Frequency Range (Frequency step) 87.5MHz-108.0MHz(50kHz)
Channel Space Selection 50k/200kHz
Usable Sensitivity (S/N:30dB) 9.3dBf (0.8µ V/75Ω)
Quieting Sensitivity (S/N:50dB) 15.2dBf (1.6µ V/75Ω)
Frequency Response (±3.0dB) 30Hz-15kHz
S/N.....70dB (MONO)
Selectivity (DIN) ≥80dB (±400kHz)
Stereo Separation 40dB (1kHz)

AM

Frequency Range (Frequency step) 531kHz-1611kHz(9kHz)
Channel Space Selection 9k/10kHz
Usable Sensitivity (S/N:20dB) 28dBµ (25µ V)

CASSETTE

Tape Speed.....4.76cm/sec.
Wow/Flutter 0.12% (WRMS)
Frequency Response (±3.0dB) 30-14kHz (120µ s)
Separation 40dB (1kHz)
S/N 52dB
Preout Level/Load 1800mV/10kΩ
Preout Impedance ≤600Ω

AMP

Maximum Power 40Wx4
Full Bandwidth Power 20Wx4 (at less than 1%THD)

TONE

Bass 100Hz±10dB
Treble 10kHz±10dB

GENERAL

Operating voltage (11-16V allowable) 14.4V
Current consumption 10A
Installation size (W) 182 (mm)
(H) 53 (mm)
(D) 155 (mm)
Weight.....1400g

KENWOOD follows a policy of continuous advancements in development. For this reason specifications may be changed without notice.

KENWOOD CORPORATION

14-6, Dogenzaka 1-chome, Shibuya-ku, Tokyo 150-8501 Japan

KENWOOD SERVICE CORPORATION

P.O. BOX 22745, 2201 East Dominguez Street, Long Beach, CA90801-5745, U.S.A.

KENWOOD ELECTRONICS CANADA INC.

6070 Kestrel Road, Mississauga, Ontario, Canada L5T 1S8

KENWOOD ELECTRONICS LATIN AMERICA S.A.

P.O. BOX 55-2791, Piso 6, Plaza Chase, Cl. 47 y, Aquilino de la Guardia, Panama, Republic of Panama

KENWOOD ELECTRONICS BRASIL LTDA.

Av. Moema, 170-17, Andar-Cobertura "B", Ed. Maximum Service Center, 04077-020 Moema, São Paulo-SP-Brasili

KENWOOD ELECTRONICS UK LIMITED

Kenwood House, Dwight Road, Watford, Herts, WD1 8EB United Kingdom

KENWOOD ELECTRONICS DEUTSCHLAND GMBH

Rembrücker-Str. 15, 63150 Heusenstamm, Germany

KENWOOD ELECTRONICS FRANCE S.A.

13, Boulevard Ney, 75018 Paris, France

KENWOOD ELECTRONICS BELGIUM N.V.

Mechelensesteenweg 418, B-1930 Zaventem, Belgium

KENWOOD ELECTRONICS ITALIA S.p.A.

Via G. Sirtori 7/9, 20129 Milano, Italy

KENWOOD IBERICA S.A.

Bolivia, 239-08020 Barcelona, Spain

KENWOOD ELECTRONICS AUSTRALIA PTY. LTD. (A.C.N. 001 499 074)

16 Giffnock Avenue, North Ryde, N.S.W. 2113, Australia

KENWOOD ELECTRONICS (HONG KONG) LTD.

Unit 3712-3724, Level 37, Tower 1, Metroplaza, 223 Hing Fong Road, Kwai Fong, N.T., Hong Kong

KENWOOD ELECTRONICS GULF FZE

P.O. Box 61318, Jebel Ali, Dubai, U.A.E.

KENWOOD ELECTRONICS (THAILAND) CO., LTD.

2019 New Pechburi Road, Bangkok, Huaykwang, Bangkok, 10320 Thailand

KENWOOD ELECTRONICS SINGAPORE PTE. LTD.

1 Genting Lane #07-00, Kenwood Building, Singapore, 349544

KENWOOD ELECTRONICS (MALAYSIA) SDN BHD

#4.01 Level 4, Wisma Academy Lot 4A, Jalan 19/1, 46300 Petaling Jaya, Selangor Darul Ehsan, Malaysia